

MELLEN

NACCI 6" FURNACE

GENERAL INFORMATION

The furnace operates at temperatures up to 1250°C in air. The furnace comes standard with 1 inch and 2 inch adapters to allow one furnace to support 1 inch, 2 inch, and 6 inch diameter process tubes. The furnace has flexible heated lengths ranging from 6 inch to 36 inch. Utilizing a high-efficiency ceramic fiber insulation pack, the furnace has fast heat-up rates. The NACCI typically ships the same day.

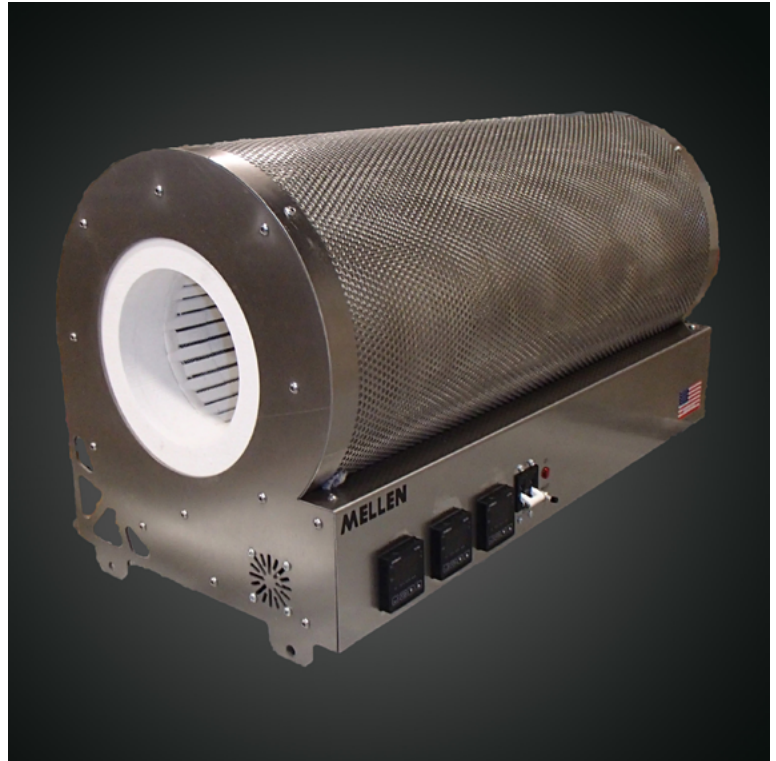
All furnaces contain integrated over temperature alarm protection. Three-zone configurations have multiple integrated over temperature alarms.

HEATING ELEMENT

The furnace utilizes Exposed APM heating elements capable of 1250°C in air.

CONTROLLER

The furnace system comes complete with an integrated dual-display controller with 8 Ramp/Soak/Programs and 8 Segments. It includes autotune and has a universal input with an auxiliary alarm output. An RS 485 Communications Port is available. An over temperature alarm is integrated.



SERIES	NACCI 6" FURNACE
MAXIMUM TEMPERATURE	1250°C
ELEMENT TYPE	EXPOSED APM
CONTROLLER	INTEGRATED CONTROL SYSTEM
VOLTS	208V/240V
VALID PRICE DATE	2017



NACCI 6" FURNACE

MODEL NUMBER	ZONE CONFIG	HEATED LENGTH (IDxD)	V:W	OVERALL DIMENSIONS (WxHxD)	PRICE
NV12.5-6x6-IC-208/240V-1Z-IOT	N/A	6" x 6"	208V:1750W	16"x14"x10.75"	\$2,395.00
NV12.5-6x12-IC-208/240V-1Z-IOT	N/A	6" x 12"	208V 3500W	16"x14"x16.75"	\$3,595.00
NV12.5-6x18-IC-208/240V-1Z-IOT	N/A	6" x 18"	208V:6050W	16"x14"x22.75"	\$4,895.00
NV12.5-6x18-IC-208/240V-3Z-IOT*	6"-6"-6"	6" x 18"	208V:6050W	16"x14"x22.75"	\$5,690.00
NV12.5-6x24-IC-208/240V-1Z-IOT	N/A	6" x 24"	208V:7500W	16"x14"x28.75"	\$5,495.00
NV12.5-6x24-IC-208/240V-3Z-IOT*	8"-8"-8"	6" x 24"	208V:7500W	16"x14"x28.75"	\$6,990.00
NV12.5-6x30-IC-208/240V-3Z-IOT*	10"-10"-10"	6" x 30"	208V:9750W	16"x14"x34.75"	\$7,490.00
NV12.5-6x36-IC-208/240V-3Z-IOT*	12"-12"-12"	6" x 36"	208V:10500W	16"x14"x40.75"	\$8,290.00

*-3Z indicates a three-zone configuration.